



**Name:** Clown Loach  
**Group:** 3 or more  
**Adult size:** 12+ inches  
**Comments:** long lifespan, no max size. Will eat invertebrates.



**Name:** Angelfish  
**Group:** solo or 3 or more  
**Adult size:** ~ 5 inches  
**Comments:** best in 25 gal tank or larger. Can be semi-aggressive/eat small fish.



**Name:** Cherry Barb  
**Group:** 4 or more  
**Adult size:** 2 inches  
**Comments:** red males, peach females. peaceful. 10 gal tank or larger.



**Name:** espei rasbora (lambchop rasbora)  
**Group:** 4 or more  
**Adult size:** <1.25 in.  
**Comments:** hardy, peaceful. Good tank mate for bettas.



**Name:** dwarf gourami  
**Group:** solo or 3 or more  
**Adult size:** 2.25 - 3 in.  
**Comments:** min. 5 gal. tank for 1. Males are striped, red or blue. Females are bronze or blue.



**Name:** Pearl Gourami  
**Group:** solo or 3 or more  
**Adult size:** 4.5 - 5 in.  
**Comments:** a more peaceful gourami. 20 gal. tank or larger.



**Name:** Swordtail  
**Group:** any  
**Adult size:** ~3 in. body  
**Comments:** only males have 'sword'. livebearer. If keeping a mixed sex group, have more females than males. Keep pH alkaline (above 7.0)



**Name:** Panda Garra  
**Group:** any  
**Adult size:** 3.5 inches  
**Comments:** algae eater, will not eat plants. Can jump - cover tank.



**Name:** ember tetra (amandae tetra)  
**Group:** 5 or more  
**Adult size:** 3/4 inch  
**Comments:** nano fish, safe with small shrimp.



**Name:** pygmy cory cat  
**Group:** 3 or more  
**Adult size:** 1.25 inches  
**Comments:** very peaceful nano. Will school at the bottom of the tank & mid-water.



**Name:** platy  
**Group:** any  
**Adult size:** < 2.5 in.  
**Comments:** livebearer. Keep pH above 7.0 and temperatures 78° or lower.



**Name:** bristlenose pleco  
**Group:** any  
**Adult size:** avg. 4 in. female, 5.5 in. male  
**Comments:** algae eater. many colors available. Females do not develop bristles. Will eat sword plants. room temp ok.



**Name:** congo tetra  
**Group:** 1m/2f or 5+ fish  
**Adult size:** 3.5 inches  
**Comments:** may bother other fish if school is too small. 30 gal tank or larger.



**Name:** marginatus pencilfish  
**Group:** 3 or more  
**Adult size:** up to 1.5 inches  
**Comments:** will nip long fins but otherwise peaceful. Interesting display behaviors



**Name:** Celestial Pearl Danio  
**Group:** 4 or more  
**Adult size:** up to 1 inch  
**Comments:** popular for planted nano tanks. Ok with adult shrimp but can eat juv.



**Name:** kubotai rasbora  
**Group:** 5 or more  
**Adult size:** up to 1.25 inches  
**Comments:** top-water swimmer. Peaceful. Can jump - keep tank covered.



**Name:** otocinclus/ oto cat  
**Group:** 3 or more  
**Adult size:** ~ 2 inches  
**Comments:** schooling, peaceful algae eater. Will not eat plants. offer plenty of food.



**Name:** praecox/ neon dwarf rainbow  
**Group:** 4 or more  
**Adult size:** ~ 3 inches  
**Comments:** prefer pH above 7. females have yellow fins.



**Name:** Molly  
**Group:** any  
**Adult size:** up to 4.5 inches  
**Comments:** livebearer. Females larger than males. keep water hard and at 7.2 pH or higher. 20 gal. tank or larger. Will nip fins.



**Name:** boesemani rainbow  
**Group:** 4 or more  
**Adult size:** 4- 5 inches  
**Comments:** Semi-aggressive community. Color varies throughout the day. Females more olive-toned than males. Min. 3 ft tank.



**Name:** kuhli loach  
**Group:** 5 or more  
**Adult size:** 3.5 inches  
**Comments:** hide often - keep a large group. peaceful. bottom dweller.



**Name:** green fire tetra  
**Group:** 5 or more  
**Adult size:** up to 2 inches  
**Comments:** generally peaceful but may nip longer fins. Hardy. Females don't have white fin tips.



**Name:** brass/ gold tetra  
**Group:** 5 or more  
**Adult size:** 1.5 inches  
**Comments:** can nip but generally peaceful. Gold is more vibrant with indirect lighting or blackened water.





**Name:** white cloud minnow  
**Group:** 4 or more  
**Adult size:** 1.5- 2inches  
**Comments:** prefer cooler water, below 77°, good in an unheated tank. Peaceful and hardy



**Name:** Brochis cat  
**Group:** 3 or more  
**Adult size:** 3 - 3.5 inches  
**Comments:** related to cory catfishes. Very peaceful bottom dweller. 2 ft tank or larger.



**Name:** mystery/ bridgesii snail  
**Group:** any  
**Adult size:** up to 1.5 inches  
**Comments:** tolerate wide range of temps. Great betta tankmate. Scavenger and will eat some algae.

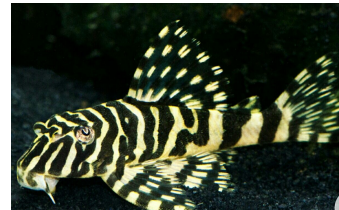


**Name:** *Biotocus opercularis* (fairy cichlid)  
**Group:** pair or more  
**Adult size:** 2-3.5 inches  
**Comments:** soft and acidic water, lots of high-quality food. Delicate and peaceful, do small water changes frequently.

**Name:** goldfish (common, comet, shubunkin)



**Group:** any  
**Adult size:** 10-12 inches  
**Comments:** room temp. Keep only with goldfish, but bristlenose pleco ok for algae eater. Min. 2 ft tank and 15-20 gallons per fish. Change water weekly.



**Name:** leopard frog pleco  
**Group:** any  
**Adult size:** 4.5 inches  
**Comments:** omnivorous pleco, not effective for algae control but will graze some. Offer veggie and protein based food.



**Name:** Goldfish (fancy/deep body)  
**Group:** any  
**Adult size:** 4.5 - 7.5 inches  
**Comments:** many varieties (ranchu, moor, ryukin, fantail, oranda...) weekly water changes, min 2 ft tank and 10-15+ gallons per fish. Best to only keep fancies together.



**Name:** Turquoise/ Lacustris rainbow  
**Group:** 4 or more  
**Adult size:** up to 5 inches  
**Comments:** can bother smaller fish, especially if group size is too small. Min. 3 ft tank. Color tone and intensity varies throughout the day.



**Name:** Betta (male)  
**Group:** solo only  
**Adult size:** ~2 inches (w/o tail)  
**Comments:** best kept long term in minimum of 1.5 gallons, with weekly water changes, at 70° or higher - may require a heater. Always use dechlorinated water. Many varieties.



**Name:** Medaka/ Japanese rice fish/ *Oryzias latipes*  
**Group:** 4 or more  
**Adult size:** up to 1.75 inches  
**Comments:** multiple colors available. Peaceful. Interesting breeding behavior. Tolerant of acid and alkaline pH, and room temp or heated water.



**Name:** erythromicron danio/  
emerald dwarf rasbora  
**Group:** 6 or more  
**Adult size:** ~ 1 inch  
**Comments:** related to (& will shoal  
with) the celestial pearl danio.  
Peaceful, safe with shrimps.



**Name:** butterfly/  
brachyura pleco (L168)  
**Group:** any  
**Adult size:** 4.5-6 inches  
**Comments:** peaceful  
pleco, omnivore but will  
eat some algae. Will change colors quickly,  
especially when stressed.



**Name:** snowball pleco (LDA33/L142)  
**Group:** solo when mature  
**Adult size:** up to 10 inches  
**Comments:** omnivorous pleco, but offer  
plenty of vegetable matter/algae and  
driftwood to graze.



**Name:** syno. alberti/ big eye  
squeaker cat  
**Group:** solo  
**Adult size:** 6 inches  
**Comments:** offering plenty of  
hiding places gives a feeling of  
security- more likely to be visible.



**Name:** sterbai cory  
**Group:** 3 or more  
**Adult size:** 2.25-2.75 in.  
**Comments:** a cory tolerant of  
higher temps (appropriate in ram or  
discus tanks).



**Name:** giant danio  
**Group:** 5 or more  
**Adult size:** 4.5-5.5 inches  
**Comments:** min. 30 inch tank.  
Peaceful. Good dither fish for  
shy or aggressive species. Can  
jump if spooked - keep tank  
covered.



**Name:** galaxy/vampire pleco  
(L240)  
**Group:** solo  
**Adult size:** 9.5 inches  
**Comments:** keep as the only  
spotted pleco in the tank. Mainly  
carnivorous species - feed

protein rich diet.



**Name:** candy stripe pleco/  
*Peckoltia vittata* (L15)  
**Group:** any  
**Adult size:** 4 inches  
**Comments:** peaceful and not  
particularly territorial. Omnivore.



**Name:** black ghost knife fish  
**Group:** solo  
**Adult size:** 14-18 inches avg.  
**Comments:** unique, carnivorous,  
electroreceptive fish. Peaceful as  
a juv. Can become aggressive  
with maturity - habit of eating  
tankmates' eyes. Stiff spine -  
wide turning radius. Min. 3ft x  
18in. tank for solo knife - more  
space if keeping with other fish.



**Name:** paleatus/ peppered/ blue leopard  
cory  
**Group:** 3 or more  
**Adult size:** 2.5 inches  
**Comments:** good in cooler water/ room  
temp. Keep at 78° max. Peaceful bottom  
feeder. Cory cats do not eat algae.





**Name:** Colombian zebra pleco (L129)  
**Group:** any  
**Adult size:** less than 4 inches  
**Comments:** omnivorous pleco. Should not bother plants. Provide hiding places and a varied diet.



**Name:** serpae tetra  
**Group:** 6 or more  
**Adult size:** ~2 inches  
**Comments:** pretty, but mean. Larger schools help, but do not keep with delicate, shy, or long-finned fish. Great addition to tanks with appropriate fish.



**Name:** moonlight gourami  
**Group:** solo or 3+  
**Adult size:** up to 6 inches  
**Comments:** do not keep with small fish (<1 in.) otherwise peaceful.



**Name:** peacock gudgeon  
**Group:** any  
**Adult size:** ~2 inches  
**Comments:** territory forming at the bottom of the tank, will compete for space with dwarf cichlids (do not mix). Easy to keep, hardy fish.



**Name:** tiger barb  
**Group:** 6-8 or more  
**Adult size:** 2- 2.75 inches  
**Comments:** many colors. Reputation as aggressive, but more peaceful when kept in large schools. Do not keep with delicate, small, or long-finned fish.



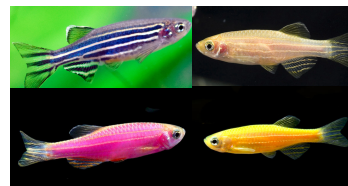
**Name:** apisto. alacrina  
**Group:** any  
**Adult size:** ~2 inches  
**Comments:** females bright yellow with black markings, males have iridescent scales on face and have longer fins.



**Name:** blue emperor/ kerri tetra  
**Group:** 4 or more  
**Adult size:** up to 2 inches  
**Comments:** not as shy as many other tetra species. Can nip long flowing fins like guppies or bettas.



**Name:** skirt tetra  
**Group:** 5-6 or more  
**Adult size:** up to 2.5 inches  
**Comments:** keep a large group to prevent nipping. Very hardy and tolerant.



**Name:** zebra danio  
**Group:** 5 or more  
**Adult size:** up to 2.5 inches  
**Comments:** small, hardy, peaceful. Many varieties, including glofish. Min. 5 gal, but preferably 10+ gal. tank.



**Name:** *Glossolepis pseudoinciscus* / millennium rainbow  
**Group:** 4 or more  
**Adult size:** 4 inches  
**Comments:** smaller and more solid red than the inciscus rainbow. Males are more red than females, females are olive toned.



**Name:** striped raphael/ talking catfish  
**Group:** any  
**Adult size:** up to 9 in, 6 in. avg  
**Comments:** not aggressive, but large mouth, best kept with med/large tankmates. Choose tank decor carefully- avoid crevices/ hollows that are similar size or smaller than the raphael, they can get stuck.





**Name:** *Distichodus teugelsi* /green distichodus  
**Group:** any, prefer company  
**Adult size:** up to 3 inches  
**Comments:** rare, african fish. Not common in the hobby. Minimal info available.



**Name:** Ulrey/ broken line tetra  
**Group:** 6 or more  
**Adult size:** 2 - 2.5 inches  
**Comments:** gorgeous and uncommon. Gold stripe is bright and highly reflective. Peaceful.



**Name:** endler/ endler's livebearer  
**Group:** any  
**Adult size:** avg. 1 in. (male), 1.5 in. (female)  
**Comments:** livebearer. Females tan or olive, larger than males. Peaceful, good choice with shrimp/ nano tank. Prefer pH above 7.0

**Name:** croaking gourami



**Group:** any  
**Adult size:** 2 - 3 inches  
**Comments:** can 'croak' using their pectoral fins. Peaceful. Can be shy, do not keep with aggressive species.



**Name:** werner/ threadfin dwarf rainbow  
**Group:** 4 or more  
**Adult size:** up to 1.5 in.  
**Comments:** males posture and display impressively. Males' fins can be longer than their body, females' shorter. Keep well-fed



**Name:** yellow king tiger pleco (L333)  
**Group:** any  
**Adult size:** 5 - 6 inches  
**Comments:** omnivorous pleco with a preference for protein rich foods. Not food competitive, take care to keep well-fed.

**Name:** African Dwarf Frog



**Group:** any  
**Adult size:** up to 2.5 in.  
**Comments:** females larger than males. Poor vision- keep with other dwarf frogs only, or gentle fish that will not steal their food. Highly scented frozen foods (brine shrimp/ bloodworm) best. Feed every other day. 5 gal. tank for 3 - 4 frogs and some snails is appropriate. Keep below 82°. Shallow water is preferred.



**Name:** Panda Cory Catfish  
**Group:** 3 or more  
**Adult size:** 2 inches or less  
**Comments:** one of the smallest and most popular cory species. Very gentle fish. Take care to feed specifically.

**Name:** wormline/ braueri pleco (L121)



**Group:** solo, multiple if tank is large  
**Adult size:** 6 inches  
**Comments:** distinguished from other plecos by the tighter network of patterning around their face. Generally peaceful, but can be territorial in smaller tanks.



**Name:** Gertrudae rainbow/ spotted blue-eye dwarf  
**Group:** 4 or more  
**Adult size:** less than 1.5 in  
**Comments:** top water fish. Females lack the long fins of the males. Males display and dance to impress the females and establish dominance.



**Name:** diamond tetra  
**Group:** 5 or more  
**Adult size:** 2.25 - 2.75 inches  
**Comments:** best viewed under indirect/ dappled light- allows scales to individually catch light and flash back different colors. Takes time to develop long fins (males only) and scales.



**Name:** nerite snail  
**Group:** any  
**Adult size:** 0.5 - 1.5 inches  
**Comments:** Cover tank - can crawl out. Always place foot down onto substrate, and fix them if upside down. Feed if no algae available. eats green spot algae. cannot breed in fresh water.

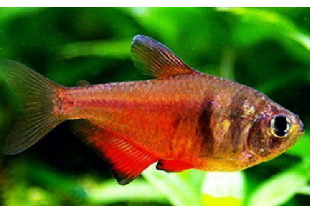


**Name:** *Atyopsis moluccensis* / wood shrimp/ bamboo shrimp/ marble shrimp  
**Group:** any  
**Adult size:** up to 4 inches, often smaller  
**Comments:** filter-feed particles from the water column, crush some flake into the tank water to make sure they stay well-fed. Must shed exoskeleton to grow - are vulnerable during this process. Loaches, most cichlids, puffers and predatory catfish are bad tankmates.



**Name:** emperor tetra (palmeri)  
**Group:** 5 or more  
**Adult size:** 1.75 - 2.5 inches  
**Comments:** fins lengthen and color develops as the fish ages. Notable 3-point tail (males only). Luminous blue eyes. Peaceful, but may nip long fins like on male

bettas and fancy guppies.



**Name:** Von Rio/ flame tetra  
**Group:** 5 or more  
**Adult size:** 1.5 inches  
**Comments:** an old classic. Peaceful. Will not develop color when disturbed, but vivid once settled in a peaceful tank.

**Name:** *Nannacara anomala* / golden/ goldeneye dwarf



**Group:** any  
**Adult size:** less than 3 inches  
**Comments:** very peaceful with most fish, but want to set up a territory, ~ 1ft<sup>2</sup> per male/female pair is appropriate. Adult males are iridescent blue-green. Females are yellow with darker patterning.

**Name:** luminatus rainbow/ red neon blue-eye dwarf



**Group:** 4 or more  
**Adult size:** 1.25 - 1.5 in.  
**Comments:** color is rich gold to deep orange-red, with a line of blue scales along the dorsal side. Females are vibrant, but do not have elongated fins.



**Name:** assassin snail  
**Group:** any  
**Adult size:** 1 - 1.5 inches  
**Comments:** will control pest snail (pond, trumpet, ramshorn, etc.) populations in a tank, but should not bother non-snail tank mates. Sensitive to copper, like many other invertebrates. Won't eat plants.



**Name:** ruby/ riesei tetra  
**Group:** 5 or more  
**Adult size:** up to 1.25 in.  
**Comments:** pretty, diminutive, peaceful tetra. Can be shy. Appropriate in nano tanks or tanks

with ornamental shrimps.



**Name:** Blue, Opaline, Gold, Platinum, or 3 spot gourami  
**Group:** solo or 3 or more  
**Adult size:** usually 4 - 5 inches

**Comments:** not appropriate with delicate, small, or timid species. Colorful & active, great



addition to a tank with appropriately sized fish (skirt tetras, brochis cats, plecos, mollies, etc).

**Name:** red tail hemiodus/ *Hemiodus gracilis*



**Group:** 6 - 8 or more

**Adult size:** 5.5 - 6.5 inches

**Comments:** uncommon & large schooling fish. Will add lots of activity to the tank. Can be skittish and jumpy - keep tank covered, & provide min. 4 ft. tank to reduce risk of injury if spooked.

**Name:** flagtail porthole catfish

**Group:** 2 or more

**Adult size:** up to 5 inches

**Comments:** peaceful bottom dweller. More active with more individuals present, but at least one other in the tank is necessary for one of these catfish to feel secure.



**Name:** fahaka puffer (Nile puffer), *Tetraodon lineatus*

**Group:** solo. Single specimen tank

**Adult size:** 18 inches

**Comments:** carnivore. true freshwater. A 'pet fish' - interactive with their owners, but hyper-aggressive, keep alone. Constantly-growing beak must be worn down - offer 'crunchy' things like clam & crab as part of their diet. Overgrown beaks prevent them from eating and must be trimmed, or the fish will starve.



**Name:** melanotaenia/ green gold cory

**Group:** 3 or more

**Adult size:** up to 2.5 inches

**Comments:** peaceful, bottom dwelling fish. Like all cories, these do not eat algae. Be sure they are fed.



**Name:** cory venezuela

**Group:** 3 or more

**Adult size:** up to 2.5 inches

**Comments:** peaceful, bottom dwelling fish. Blue- green and orange, very vibrant coloration for a cory.



**Name:** elegant cory (elegans)

**Group:** 3 or more

**Adult size:** up to 2.25 in.

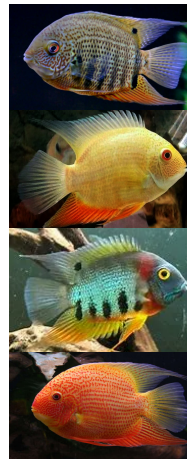
**Comments:** a pretty and highly-patterned small cory. Peaceful fish.

**Name:** severum cichlid

**Group:** solo or 4+

**Adult size:** up to 12 in, but often 8-10 in.

**Comments:** hardy. Will eat plants. 'Severum' is a common name for fish in the *Heros* genus- includes multiple species and cultivated varieties. sizable, can be aggressive- not a good tankmate for small or delicate fish. Good with large or aggressive fish like geophagus or thorichthys, larger schooling fish like giant danios, silver dollars, rainbows and tiger barbs, and bottom feeders like plecos, brochis, and raphael catfish.

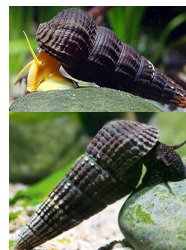


**Name:** rabbit snail

**Group:** any

**Adult size:** 3 - 4 inches

**Comments:** will not bother most plants. will eat some algae (but not effective algae control). Multiple varieties. Sensitive to copper. Do not keep with most loaches, cichlids, or any puffer.

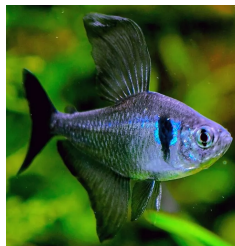


**Name:** Black Phantom Tetra

**Group:** 5 or more

**Adult size:** up to 2 inches

**Comments:** deep black color is most vibrant in indirect/dappled light or blackened water. Very adaptable and hardy fish.







**Name:** *Pseudomugil tenellus* (delicate blue-eye rainbow)

**Group:** 4 or more

**Adult size:** 1.5 - 2 inches

**Comments:** most vibrant in a planted tank. Can jump - keep lid closed.

Freshwater, but tolerant to brackish conditions.

**Name:** Madagascar rainbow (*B. gaeyi*)

**Group:** 4 or more

**Adult size:** commonly 4 - 5.25 inches.

Rarely up to 6 inches

**Comments:** active, fast fish. Can be skittish and timid if kept in too small of a group. Prefer pH above 7.0



**Name:** apisto. agassizi

**Group:** any

**Adult size:** 1.5 - 2 inches

**Comments:** provide room at the bottom of the tank for males to establish a territory. Females are smaller & more yellow than males.



**Name:** *Garra rufa* (doctorfish)

**Group:** any

**Adult size:** commonly 3.25 - 4 inches, but up to 5 in. possible

**Comments:** algae eater. Active and will school if given a group.



**Name:** *Geophagus winemilleri*

**Group:** any

**Adult size:** 6.5 - 8 inches

**Comments:** brightly patterned with red and blue stripes on both males and females. Partial mouthbrooder. Substrate - sifting behavior, may disturb plants.



**Name:** Venezuela black cory (*C. schultzei* var. black)

**Group:** 3 or more

**Adult size:** up to 2.5 inches

**Comments:** not venezuelan, schultzei cory is endemic to Peru. black variety is uncommon. may be more sensitive than other cory catfish

to tank conditions. Not food competitive - care should be taken to feed well.



**Name:** Cherry shrimp (*Neocaridina davidi*)

**Group:** any. 6+ to start breeding

**Adult size:** ~ 1 - 1.25 inches

**Comments:** many lines & colors, all with unique names (Bloody Mary, blue velvet, chocolate, banana, rili, jade...) All colors can interbreed- if trying to breed, choose a single color to prevent clear or dull shrimp within a few generations. Harder water with a pH between 7.0 - 7.6 for breeding, but can live outside this range. Must molt to grow - vulnerable. Choose small & gentle tankmates. Sensitive to copper.



**Name:** amano shrimp/ *Caridina multidentata*

**Group:** any

**Adult size:** up to 2 in. avg.

**Comments:** females larger than males. Will eat many difficult algae. Room temp. or heated. Molts - vulnerable. Don't keep with most loaches, cichlids, predatory cats, or any puffer. Sensitive to copper.



**Name:** Crystal Shrimp/Bee Shrimp (*Caridina cantonensis*)



**Group:** any, 6+ rec. to start breeding

**Adult size:** ~1.25 inches

**Comments:** crystal red shrimp are the most common color, but crystal black, and other colors & fancy varieties of bee shrimp are also available. Breed best in pH 6.2 - 7.0 and softer water, but will live outside of these conditions. Sensitive to copper, and still need available calcium. All shrimp must molt to grow.

**Name:** L191 royal pleco



**Group:** solo, can be territorial

**Adult size:** up to 19 inches

**Comments:** all panaque-type plecos need wood in their diet.

Also provide vegetable matter

like cucumber or zucchini. slow growing. Will eventually need 100+ gallons but can be raised in smaller tanks if good water quality and diet are maintained.

**Name:** Yellow Tail Congo Tetra

**Group:** 1M/2F or 5+

**Adult size:** up to 3 inches

**Comments:** Uncommon, larger tetra. iridescent blue body & and yellow fins. Males more colorful than females.



**Name:** upside-down catfish (*Synbranchia nigriventris*)

**Group:** any, but prefer company

**Adult size:** 3 - 4 inches

**Comments:** prefers a tank that has plenty of cover objects to swim around. can swim both upside - down and rightside - up.



**Name:** reed/ veilfin tetra (*Hyphessobrycon elachys*)

**Group:** 5 or more

**Adult size:** 3 - 4 inches

**Comments:** peaceful and small. In the wild, these tetras will shoal with *Cory. hastatus*. This can be seen in aquaria if sufficient schools of each species are kept.



**Name:** Red & Blue Columbian/ Redfin Tetra

**Group:** 6 or more

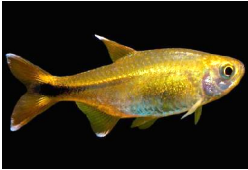
**Adult size:** less than 3 inches

**Comments:** reputation for being nippy fish, but larger schools should prevent this. Still should not be kept with fish like fancy guppies or bettas.





**Name:** brilliant rasbora  
**Group:** 4 or more  
**Adult size:** 2.5 - 3.5 inches  
**Comments:** active but peaceful fish. Hardy. Develops red at the tail with age.



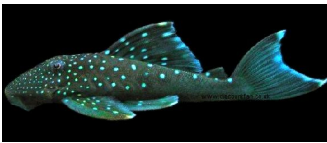
**Name:** silvertip tetra  
**Group:** 5 or more  
**Adult size:** 2 inches  
**Comments:** hardy and brightly colored. can be nippy. Don't keep with delicate or long-finned fish.



**Name:** mega clown pleco (L340)  
**Group:** any  
**Adult size:** up to 3.25 inches  
**Comments:** omnivorous pleco, will eat some algae but prefers more protein-rich foods. Not food

competitive, be sure it is well-fed.

**Name:** blue phantom pleco (L128)



**Group:** any  
**Adult size:** 7 - 8 inches avg.  
**Comments:** omnivorous & will eat some algae but should be offered other food as well. Sensitive to poor water quality.

**Name:** Longipinnis cory



**Group:** 3 or more  
**Adult size:** up to 2.5 inches  
**Comments:** distinguished from paleatus longfin (cultivar) by the extension of only the dorsal fin, others fins normal. Fewer patches of dark patterning on the body than paleatus.



**Name:** redfin cactus/scarlet pleco (L25)



**Group:** solo

**Adult size:** 16 - 18 in. avg.

**Comments:** large, carnivorous pleco. Eats frozen clams and shrimp readily. Provide appropriately - sized cover.

**Name:** Leopard Ctenopoma/ Bush-Fish/ African Leaf-Fish

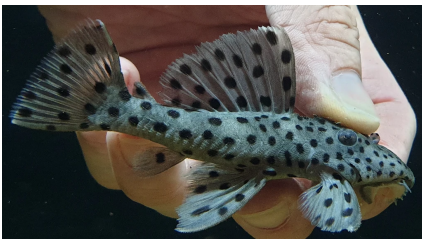
**Group:** any



**Adult size:** 5-6 inch average, rarely up to 8 inches

**Comments:** an 'oddball' gourami from Africa. Peaceful & good with larger community fish. Large mouth- should not be kept with very small fish. Long-lived, slow-growing, and hardy.

**Name:** sultan pleco (*Leporacanthicus joselimai*, L264)



**Group:** any

**Adult size:** up to 6 inches

**Comments:** omnivorous pleco, offer both protein and veggie rich foods. Generally peaceful, just provide enough room, especially for multiple.



**Name:** *Apisto. borellii*

**Group:** any

**Adult size:** up to 2.5 inches

**Comments:** females smaller and more yellow-toned than males. Yellow- head & Opal are the most common colors variants available. 72° to 80° water temperature. Provide appropriate territory per pair.



**Name:** Silver Dollar

**Group:** 4 or more

**Adult size:** 5-15 in., species dependent

**Comments:** top to bottom with max. lengths: red hook (10-12 in.), spotted (6 in.), common (6 in.), blue hook (8 in.). There are over a dozen distinct but related species with the common name of 'silver dollar'. Different species may be used to make up the shoal, more silver dollars is always better. Can be nervous fish. Herbivores, often eat live plants. Active fish, need a very large tank.

**Name:** African Clawed Frog



**Group:** any

**Adult size:** not including legs: 5 in. female, 2.5 in. male

**Comments:** temp. 68°-78°. Best kept species-only or with larger & peaceful fish like bristlenose plecos. Can eat small fish, and bully others. Do not keep with aggressive species. Dechlorinate water & and keep clean, amphibians are sensitive to poor water quality. A shallower tank with a larger base is preferable to a taller tank of equal water volume. Can live upwards of 10 - 15 years. Feed foods like sinking pellets & frozen bloodworms.



**Name:** *Thorichthys aureus* / Aureum/ Gold cichlid



**Group:** solo or 3+

**Adult size:** 5 inches

**Comments:** both males and females develop bright yellows and blues with maturity. Can be aggressive, do not keep with timid/small species.

**Name:** neon tetra

**Group:** 4 or more

**Adult size:** 1.5 inches

**Comments:** peaceful, brightly colored. 72°-80°. Similar to cardinal tetra, but neon's red stripe does not reach the operculum (gill plate).



**Name:** clown pleco (*Panaque maccus*)

**Group:** any

**Adult size:** less than 4 inches

**Comments:** peaceful but shy. Like all *Panaque* species, clowns need driftwood to graze on. Will eat some algae, and will accept veggies and prepared food. Likely to nibble on aquarium plants if underfed.



**Name:** panda cichlid (*Apisto. panduro* \*)

\*incorrectly 'pandurini'

**Group:** any

**Adult size:** up to 3 in, females smaller

**Comments:** females are more vibrant in this species, with lemon-yellow base coloration and a dark black mask. Males are iridescent, steely blue. Female pandas are more territorial than most female apistos, add lots of decor (caves, rocks, fake plants) to break up the line of sight.



**Name:** furcata rainbow/ forktail blue-eye

**Group:** 4 or more

**Adult size:** up to 2.25 inches

**Comments:** generally peaceful, but can be nippy towards especially long-finned fish. Top-water swimmer, can be jumpy - keep lid on.



**Name:** splendid loach (*Yasuhikotakia splendida*)

**Group:** 5 - 6 or more

**Adult size:** up to 4 inches

**Comments:** a very beautiful but boisterous species. Will eat invertebrates. Can be cruel when kept alone or in pairs- large schools help curb outward aggression because the loaches



will establish a complex social hierarchy. Do not keep with fish likely to be targeted (cory catfish, guppies, small schooling fish). Good tankmates could be rosy barbs, tiger barbs, large species of rainbows, blue (3 spot) gourami, & similar size or larger loaches.

**Name:** blue-stripe rasbora (*Rasbora sarawakensis*)

**Group:** 5 or more

**Adult size:** 1.75 inches

**Comments:** uncommon and pretty rasbora. Peaceful fish, and appropriate with gentle species.





**Name:** rabauti cory

**Group:** 3 or more

**Adult size:** 2 inches

**Comments:** very gentle, bottom dwelling. Don't expect to survive on scavenging alone, keep well-fed.



**Name:** rubberlip pleco, bulldog pleco

**Group:** any

**Adult size:** 4 inches avg.

**Comments:** a peaceful & small algae-eater.



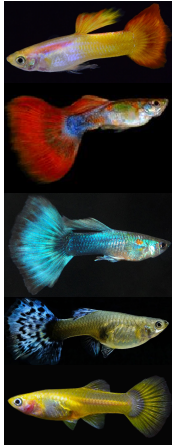
**Name:** schwartzi cory

**Group:** 3 or more

**Adult size:** 2.25-2.75 in.

**Comments:** highly patterned cory, with some yellow on top of the head. Peaceful. Bottom feeder.





**Name:** guppy

**Group:** any

**Adult size:** 1.5 - 2.25 inches

**Comments:** \* top 3 males, bottom 2 females

Very peaceful, active and brightly colored. 5 gal.+ tank. Livebearer. To house males and females together, keep equal/ more females to males. Ok at room temp, keep below 82°. Keep with gentle fish: ex. espei, harlequin, or kubotai rasboras, neon tetras, cherry barbs, cory catfishes, kuhli loaches, amano shrimp, snails, white cloud minnows, and most plecos. pH above 7.0 (alkaline).

**Name:** reticulated hillstream loach/ *Sewellia lineolata*

**Group:** any

**Adult size:** 2 - 2.5 inches

**Comments:** small tanks with few individuals may facilitate sparring behavior over territory, but these are otherwise peaceful. Must continually graze, but do



not eat many algae & should not be relied upon to control it- offer plenty of supplementary food. Keep the tank well oxygenated and very clean, but high flow is not necessary. 68° to 77° ideal, but can tolerate warmer.

**Name:** zebra loach/ *Botia striata*

**Group:** 3 or more

**Adult size:** up to 3.5 in.

**Comments:** will eat invertebrates.

Shy if kept singly, but generally active when settled. Keep with schooling/active fish. May nip long fins such as guppies or bettas.





**Name:** rhino/ alligator pleco  
**Group:** any (with enough space)  
**Adult size:** 9 - 11 inches  
**Comments:** will eat algae, veggies, and protein-rich prepared foods. A large pleco, keep well-fed. Generally peaceful, but will need a large space to keep multiple (solo ok).

**Name:** hi-fin green phantom (L200a), *Baryancistrus demantoides*



**Group:** any (with enough space)  
**Adult size:** 6 inches  
**Comments:** will eat algae, veggies, and protein-rich prepared foods. keep well-fed. Distinct species from L200 green phantom (*Hemiancistrus subviridis*) - differences in the dorsal

and adipose fins are a reliable way to tell. L200a - connected dorsal and adipose fin, L200 - distinct gap between dorsal and adipose fins.

**Name:** green phantom pleco (L200), *Hemiancistrus subviridis*



**Group:** any (w/ enough space)  
**Adult size:** 6 inches  
**Comments:** will eat algae, veggies, and protein-rich prepared foods. keep well-fed. Different species than L200a green phantom (*Baryancistrus demantoides*) - differences in the

dorsal and adipose fins are a reliable way to tell. L200a - connected dorsal and adipose fin, L200 - distinct gap between dorsal and adipose fins.

**Name:** blue cory/ *Corydoras nattereri*



**Group:** 3 or more  
**Adult size:** ~ 2.5 inches  
**Comments:** the blue coloration on this cory is due to iridescent scales, but under direct or harsh light these won't be visible. fake/ live plants or driftwood will scatter the light & show the shiny blue.

**Name:** *Apisto. trifasciata* / 3-stripe dwarf



**Group:** any  
**Adult size:** ~2 inches  
**Comments:** keep with peaceful fish (tetras, cory cats, otos, plecos), avoid fish like guppies & anabantids. Males develop an exceptionally tall dorsal fin.

**Name:** roseline shark (denison barb, torpedo barb)

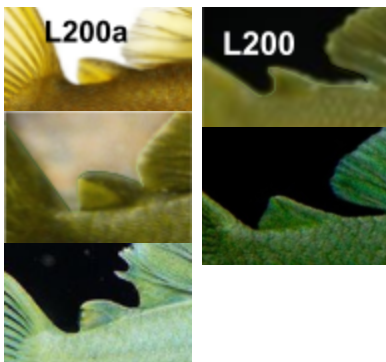


**Group:** 5 or more  
**Adult size:** ~ 4 inches  
**Comments:** very active & pretty schooling fish. Can be jumpy- always keep in a group, & in a 4ft tank with cover. Large, but generally peaceful.

**Name:** Albino Cory Cat



**Group:** 3 or more  
**Adult size:** 2.5 in. avg.  
**Comments:** peaceful. 10 gal tank or larger. Not an algae eater - take care to feed specifically.



**Name:** cardinal tetra  
**Group:** 6 or more  
**Adult size:** 2 inches  
**Comments:** 15+ gallons and large group best. Peaceful. If choosing between cardinals and neons, cardinals prefer warmer water (77°-84°) while neons prefer cooler (72°-79°).